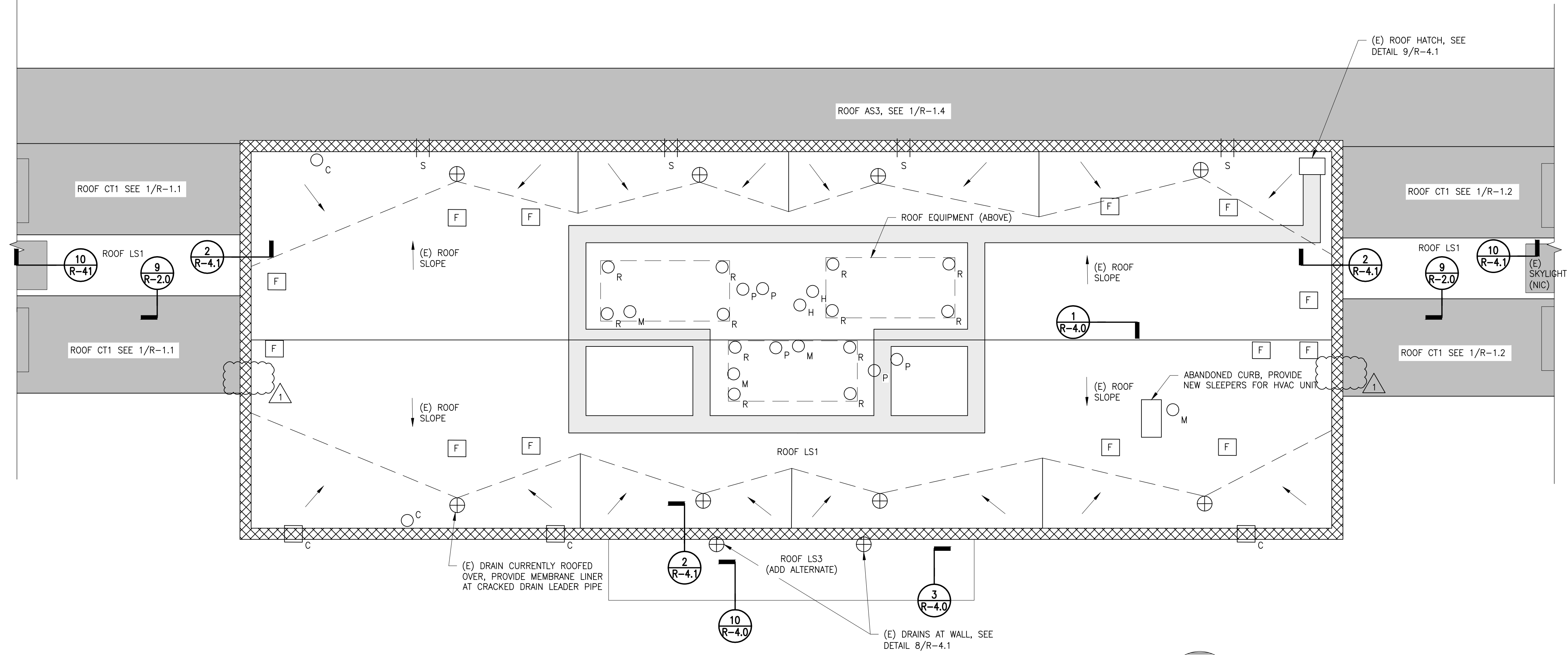
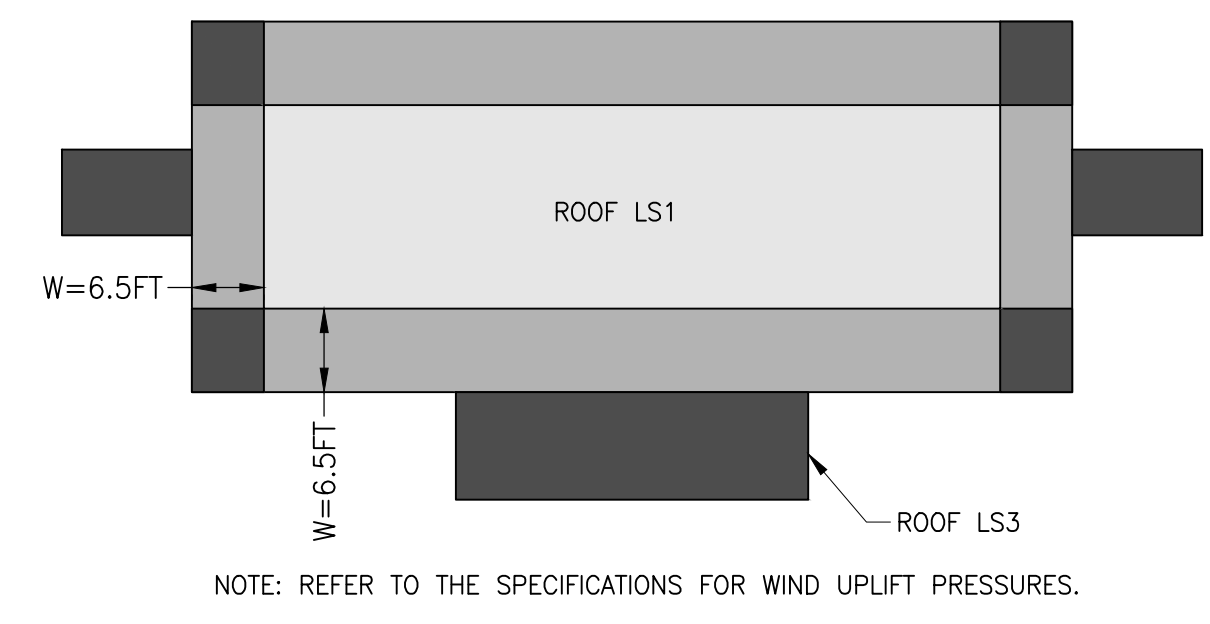
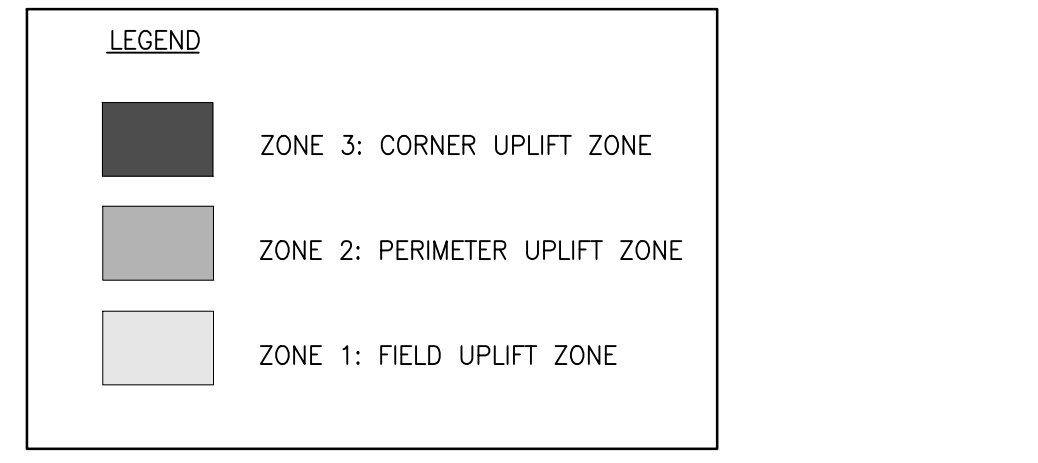
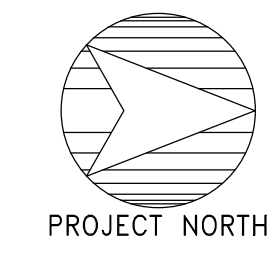


- LEGEND**
- XX# ROOF NAME
 - (E) MEDIUM-HEIGHT PARAPET, SEE DETAIL 8/R-4.0
 - (E) ROOF DRAIN, SEE DETAIL 4/R-4.0
 - (E) PIPE PENETRATION, SEE DETAIL 5/R-4.0
 - (E) ROOFTOP UNIT SUPPORT, SEE DETAIL 5/R-4.0, SIM
 - (E) HOT PIPE PENETRATION, SEE 6/R-4.0
 - (E) MULTIPLE PIPE PENETRATION, SEE DETAIL 1/R-4.1
 - THROUGH-WALL SCUPPER, SEE DETAIL 9/R-4.0
 - (E) FAN PENETRATION, SEE DETAIL 7/R-4.1
 - WALKWAY PADS
 - ROOF WORK NOT DESCRIBED ON THIS SHEET, REFER TO OTHER SHEETS AS INDICATED FOR SCOPE OF WORK.
 - CAMERA ON BACKSIDE OF PARAPET, COORDINATE WITH PROPARK FOR REMOVAL AND REINSTALLATION.
 - CAMERA ON TOP OF PARAPET, COORDINATE WITH PROPARK FOR REMOVAL AND REINSTALLATION, SEE DETAIL 7/R-4.0
 - DIRECTION OF ROOF SLOPE, PROVIDE CRICKETS FOR DRAINAGE, UNLESS NOTED AS (E) ROOF SLOPE
 - VALLEY
 - RIDGE



1 PLAN: LOW-SLOPE ROOFS LS1 AND ADD ALTERNATE LS3
 AT CENTER WING AND EAST ENTRANCE CANOPY SCALE: 3/32" = 1'-0"



2 PLAN: WIND UPLIFT ZONES

SUMMARY SCOPE OF WORK - PVC ROOFING

NOTE: THIS SUMMARY SCOPE OF WORK IS PROVIDED FOR THE CONVENIENCE OF THE CONTRACTOR, AS AN OVERVIEW INTRODUCTION TO THE SCOPE OF WORK INCLUDED IN THE DRAWINGS AND SPECIFICATIONS, WHICH SUPERSEDE THIS OVERVIEW SUMMARY. REVIEW THE DRAWINGS AND SPECIFICATIONS THOROUGHLY FOR THE FULL SCOPE OF WORK.

BASE BID

A. ROOF LS1: LOW-SLOPE ROOF AT CENTER WING

1. REMOVE THE EXISTING BALLASTED EPDM ROOFING SYSTEM INCLUDING: STONE BALLAST, EPDM MEMBRANE (NOTE THAT TWO LAYERS ARE PRESENT IN SOME LOCATIONS), AND INSULATION, DOWN TO THE EXISTING LIGHT-WEIGHT CONCRETE TOPPING (TO REMAIN).
2. INSPECT AND SOUND THE EXISTING LIGHT-WEIGHT CONCRETE TOPPING TO IDENTIFY AREAS OF DELAMINATION, SPALLING, OR OTHER DAMAGE.
3. PROVIDE NEW PVC MEMBRANE ROOFING SYSTEM CONSISTING OF (FROM BOTTOM TO TOP): ADHERED VAPOR RETARDER MEMBRANE, INSULATION INCLUDING TAPERED INSULATION TO PROVIDE SLOPE TO DRAIN, COVER BOARD FASTENED TO THE ROOF DECK, PVC ROOFING MEMBRANE ADHERED WITH HEAT-WELDED SEAMS. PROVIDE PVC FLASHING MEMBRANE OR PMMA LIQUID FLASHING AT ROOF PENETRATIONS, AS INDICATED ON THE DRAWINGS.
4. PROVIDE PLYWOOD AND WOOD BLOCKING ASSOCIATED WITH REPLACEMENT ROOFING SYSTEM, AT LOCATIONS SHOWN ON THE DRAWINGS AND WHERE REQUIRED BY THE ROOFING SYSTEM MANUFACTURER.
5. PROVIDE COPPER FLASHING AT ROOF CURBS, VENT PENETRATIONS, AND OTHER LOCATIONS AS SHOWN ON THE DRAWINGS.
6. PROVIDE COPPER COPING CAPS AT THE PARAPETS.
7. PROVIDE ROOF WALKWAY PADS AT LOCATIONS SHOWN ON THE DRAWINGS.
8. REMOVE AND REPLACE THE EXISTING CLAMPING RINGS, AND STRAINERS (EIGHT TOTAL).

9. PROVIDE NEW SCUPPER DRAINS THROUGH THE MASONRY PARAPETS AT LOCATIONS SHOWN ON THE DRAWINGS (4 TOTAL). PROVIDE PVC-CLAD SHEET METAL LINER AT NEW SCUPPER DRAINS, INTEGRATED WITH THE NEW ROOFING SYSTEM, AS SHOWN IN THE DRAWINGS.
10. PROVIDE MEMBRANE LINER AT CRACKED DRAIN LEADER PIPE, AT LOCATION (1 TOTAL) INDICATED IN THE DRAWINGS, FULL BUILDING HEIGHT.
11. REMOVE AND REPLACE THE EXISTING ROOF HATCH, LOCATE NEW ROOF HATCH IN THE SAME LOCATION AS THE EXISTING.
12. DISCONNECT AND RECONNECT EXISTING FANS, MECHANICAL UNITS, AND CONDUITS AS NEEDED TO COMPLETE THE WORK.

B. ADD ALTERNATE ROOF LS3: LOW-SLOPE ROOF AT CENTER WING ENTRANCE CANOPY

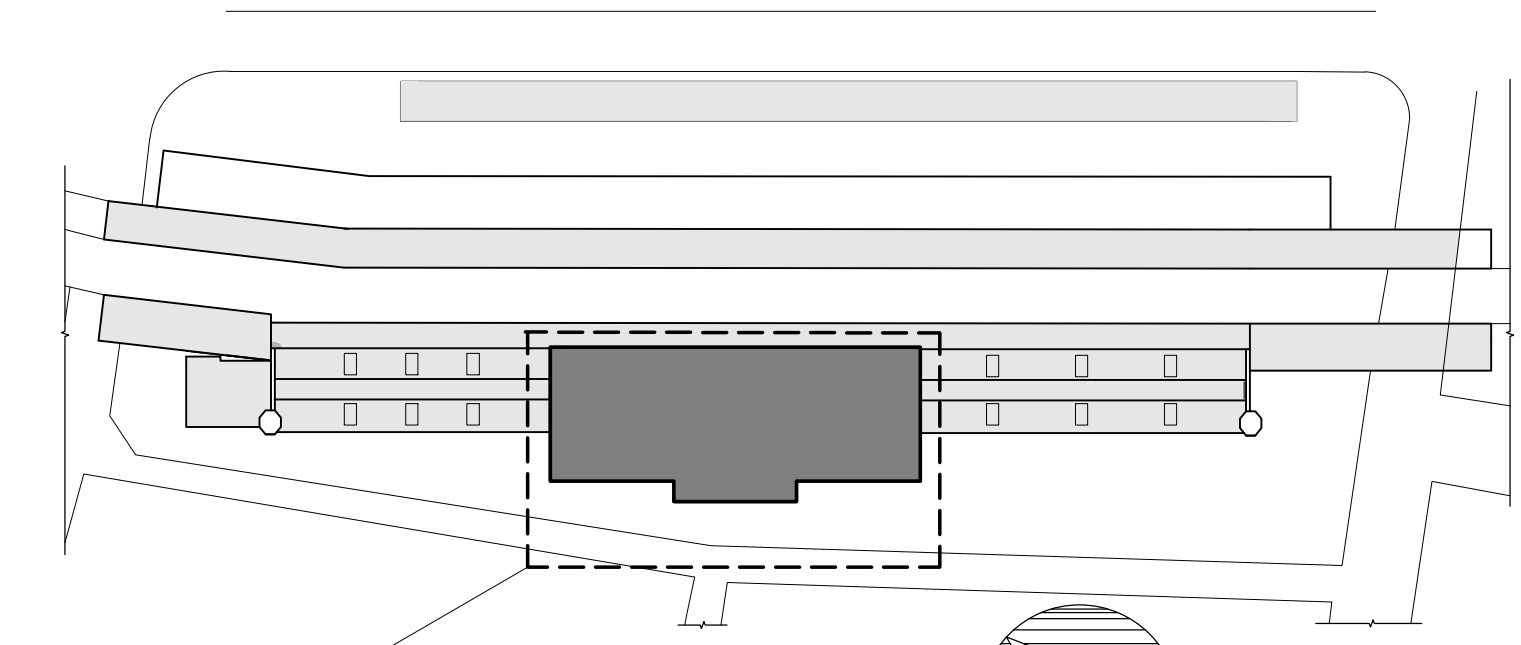
1. REMOVE THE EXISTING EPDM ROOFING SYSTEM INCLUDING: EPDM MEMBRANE AND INSULATION DOWN TO THE EXISTING PLYWOOD ROOF DECK (TO REMAIN).
2. PROVIDE NEW PVC MEMBRANE ROOFING SYSTEM CONSISTING OF (FROM BOTTOM TO TOP): ADHERED VAPOR RETARDER MEMBRANE, INSULATION INCLUDING TAPERED INSULATION TO PROVIDE SLOPE TO DRAIN, COVER BOARD FASTENED TO THE PLYWOOD SHEATHING, PVC ROOFING MEMBRANE ADHERED WITH HEAT-WELDED SEAMS.
3. REMOVE AND REPLACE THE EXISTING CLAMPING RINGS AND STRAINERS (TWO TOTAL).
4. PROVIDE PLYWOOD AND WOOD BLOCKING ASSOCIATED WITH REPLACEMENT ROOFING SYSTEM, AT LOCATIONS SHOWN ON THE DRAWINGS AND WHERE REQUIRED BY THE ROOFING SYSTEM MANUFACTURER.
5. PROVIDE COPPER FLASHING AT ROOF EDGES AND AT THE BASE OF THE RISING WALL.

UNIT PRICE WORK:

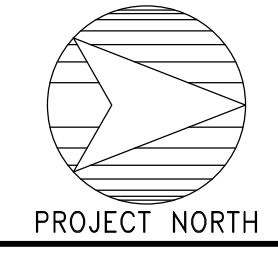
C. ON A UNIT PRICE BASIS, UNDERTAKE OF LOCALIZED ROOFING REPAIRS WHERE DIRECTED BY THE ENGINEER IN THE FIELD. A SUMMARY OF UNIT PRICE WORK INCLUDING QUANTITIES IS INCLUDED IN THE TABLE ON THIS SHEET. FOR PRICING PURPOSES, USE THE QUANTITIES IN THE TABLE ON THIS SHEET. DO NOT TAKE-OFF QUANTITIES FROM ELEVATION SHEETS. PROVIDE UNIT PRICING FOR ADDITIONAL REPAIRS, ABOVE THE QUANTITIES LISTED IN THE TABLE; REFER TO SPECIFICATION SECTION 010100 - SUMMARY OF WORK.

UNIT PRICE QUANTITIES FOR PVC ROOFING TO BE INCLUDED IN THE BASE BID TOTAL FOR LS1

ITEM	QUANTITY	UNIT
ROOF LS1: REMOVE DELAMINATED, SPALLED, AND DAMAGED AREAS OF THE LIGHTWEIGHT CONCRETE TOPPING AND REPLACE WITH NEW LIGHTWEIGHT CONCRETE TOPPING	20	SF
ROOF LS1: REPAIR DAMAGED CONCRETE DECK AT DRAIN TO BE LINED	5	SF



KEY PLAN



SIMPSON GUMPERTZ & HEGER
 Engineering of Structures and Building Enclosures

Simpson Gumpertz & Heger Inc.
 480 Totten Pond Road
 Waltham, Massachusetts 02451
 Main: 781.907.9000 Fax: 781.907.9009
 www.sgh.com

Boston
 Chicago
 Houston
 Los Angeles
 New York
 San Francisco
 Washington, DC

Greater Hartford Transit District

GHTD PROJECT NO. 02-021

Consultant

BID SET - NOT FOR CONSTRUCTION

UNION STATION TRANSPORTATION CENTER ROOFING REPAIR/REPLACEMENT
 1 UNION PLACE, HARTFORD, CT

LOW SLOPE ROOF PLANS AT CENTER WING

Drawing Title

Project No. 191971.00	Checked JCD/KSW	Date 08/03/2020
Drawn RML	Approved MBB	Scale AS NOTED

Drawing No.
R-1.5